

CANS Tips

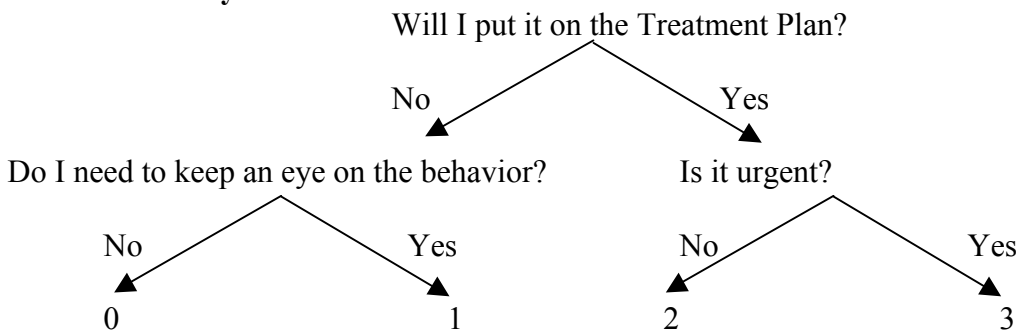
6 Key Characteristics

1. Items impact service planning
You should use your ratings to identify needs for the treatment plan.
2. Level of items translates into Action Levels
An item rated 2 or 3 requires action.
3. It's about the child, not the service
Don't rate behavior with a low score if the child has been in a controlled environment.
Artificial environments may mask the behavior.
4. Rate the "what" and not the "why"
Rate the behavior without using trying to justify the behavior.
5. Consider Cultural and Developmental Context
Age Normative Development
Cultural context of family/community/etc
6. 30ish day window – Relevancy and Freshness
Keep the information fresh and RELEVANT.
Don't get stuck on 30 days – if it's relevant and older than 30 days, still use the information.
Action Levels trump Time Frames – if it should be on your treatment plan, rate it higher!

Focus on the general Framework instead of the manual definitions

<i>Needs</i>		<i>Strengths (only used in Child Strengths section)</i>
No evidence	0 (Good)	Centerpiece
Watchful/History	1	Useful
Action Needed	2	Needs Work
Urgent Action Needed	3 (Less Good)	No strength identified/no evidence

Decision Tree – When you're stuck



Caregiver/Family is Permanent Planned Caregiver

- Usually not paid caregivers
- What's the county's plan for permanency
- Defaults to Bio Family